

**CHEP**

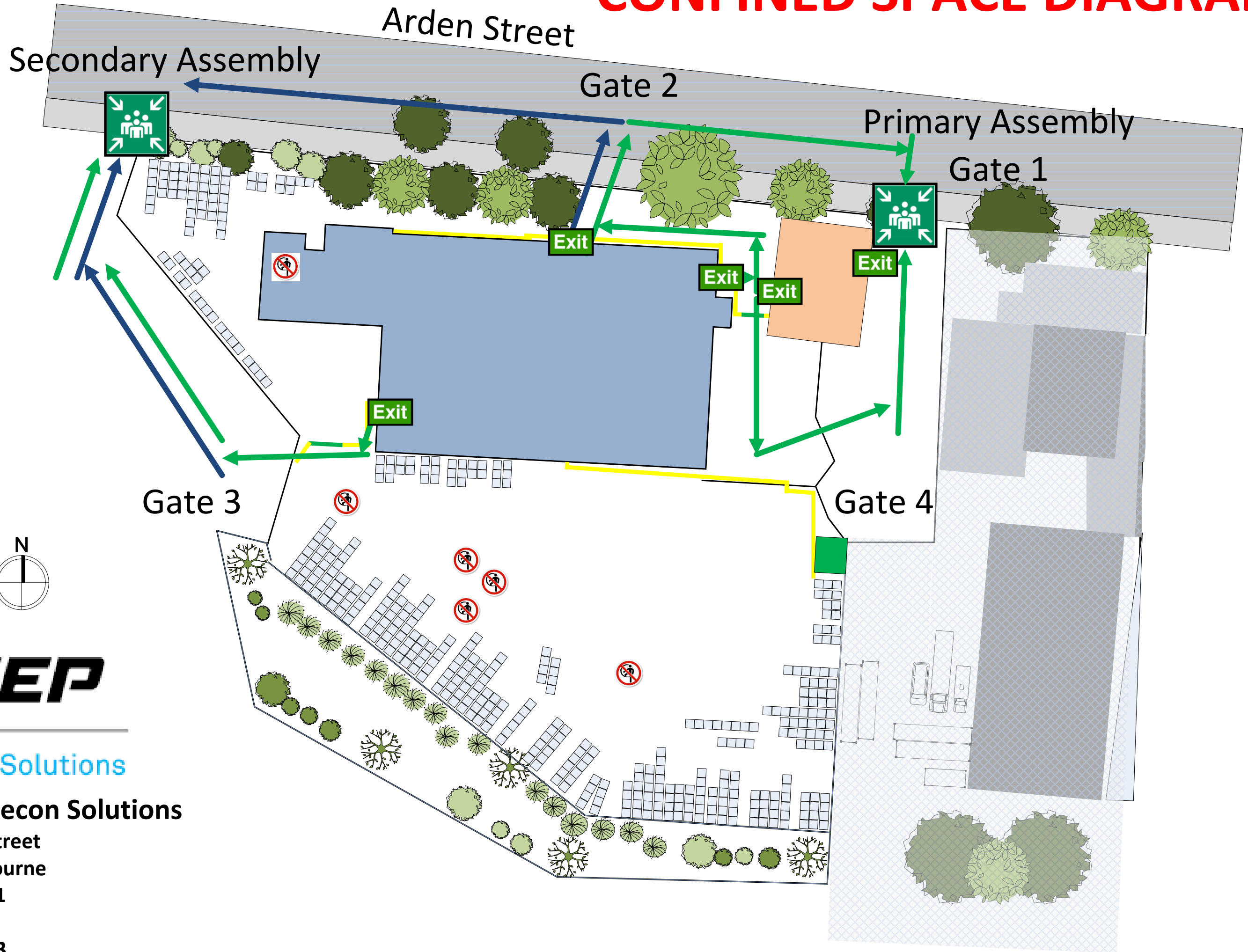
Pallecon Solutions

**CHEP Pallecon Solutions**

243 Arden Street  
 North Melbourne  
 Victoria 3051

1300 133 133

# CONFINED SPACE DIAGRAM



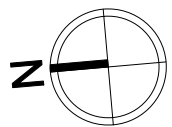
**CHEP**

Pallecon Solutions

**CHEP Pallecon Solutions**

243 Arden Street  
North Melbourne  
Victoria 3051

1300 133 133



# EVACUATION DIAGRAM



## HOW TO USE A FIRE EXTINGUISHER

- PULL THE PIN**  
Break seal and test the extinguisher
- AIM AT THE BASE OF THE FIRE**  
Make sure you have a means of escape
- SQUEEZE THE HANDLE**  
To operate the extinguisher and discharge the agent
- SWEEP FROM SIDE TO SIDE**  
Completely extinguish the fire



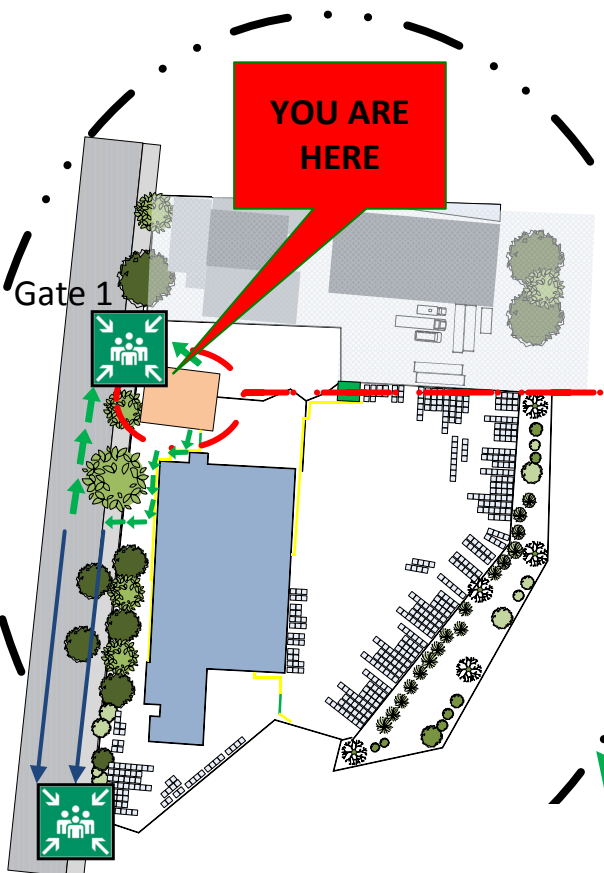
## IN CASE OF FIRE

- R** REMOVE PEOPLE FROM IMMEDIATE DANGER
- A** ALERT NEARBY EMPLOYEES AND MEMBERS OF THE PUBLIC TO EVACUATE THEN DIAL **000**  
OPERATE MANUAL CALL POINT IF APPLICABLE
- C** CONFINE SMOKE & FIRE, CLOSE DOORS & WINDOWS IF SAFE TO DO SO, STAY LOW UNDER SMOKE
- E** EXTINGUISH AND CONTROL FIRE IF SAFE TO DO SO



NOT TO SCALE\*

## ADMINISTRATION BUILDING



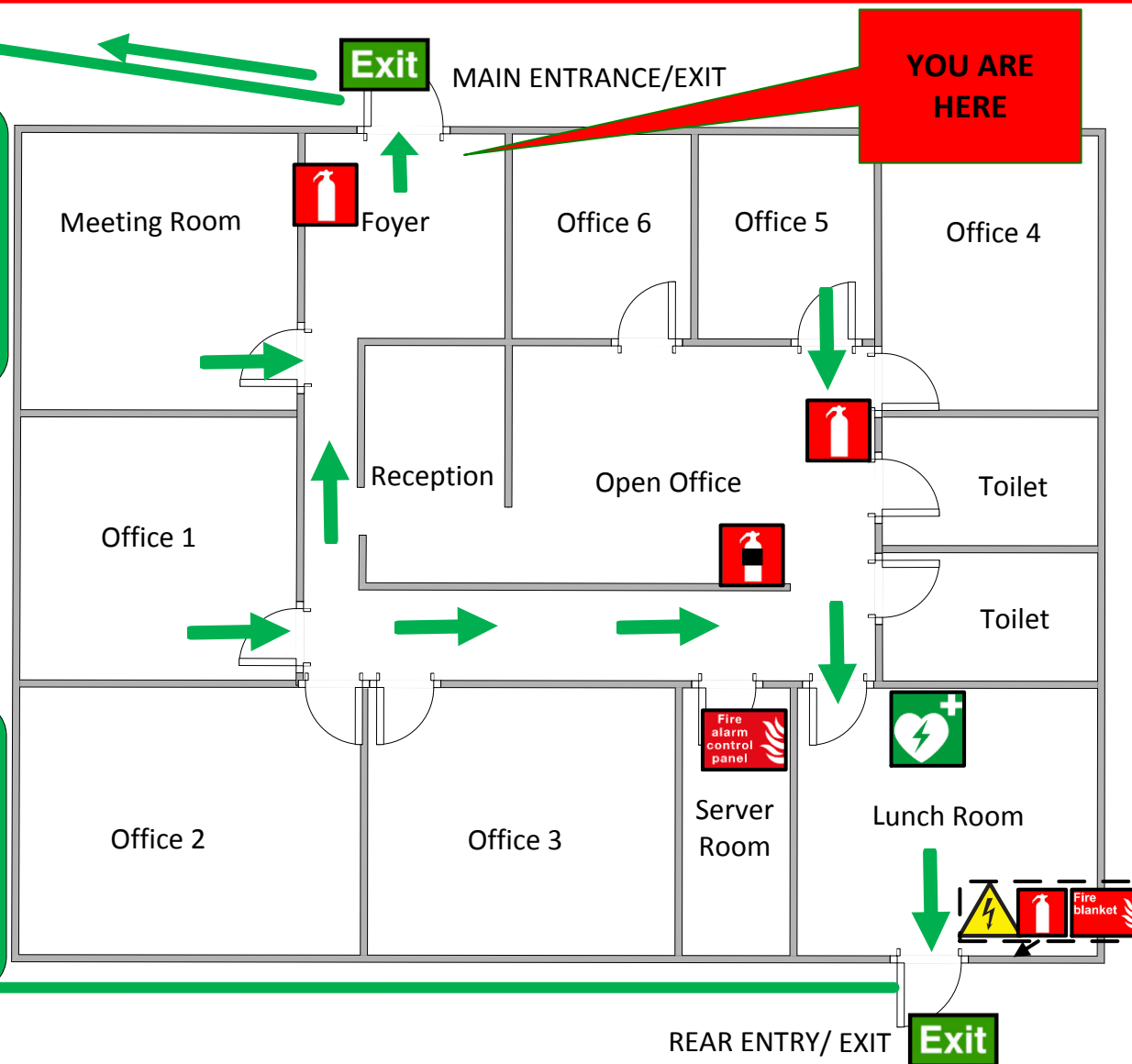
Exit Via Gate 1

**Exit Via NE Gate (Gate 1)**  
Proceed to Assy Area to Immediate Left of Gate 1

Secondary Assy Area to be used if Primary is unsafe, Exit Gate 1 and proceed to NW corner of Property

**Exit Via Gate 2** by following walkway in a NW direction. Proceed to Primary Assy outside Gate 1 by turning Right after exiting Gate 2.

Proceed to Secondary if appropriate by turning Left to NW corner of Property



Pallecon Solutions

**CHEP Pallecon Solutions**  
243 Arden Street  
North Melbourne  
Victoria 3051

1300 133 133  
DRAFTED 13/02/2017 EXPIRES 13/02/2020  
MUST BE REVIEWED ANNUALLY

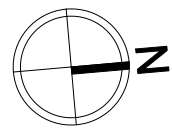
### SITE LEGEND

- CONTROL PANEL
- BOOSTER POINT
- FIRE HYDRANT
- FIRE HOSE
- FIRE EXTINGUISHER
- FIRE BLANKET
- FIRST AID
- AED
- YOU ARE HERE MARKER
- ASSEMBLY AREA
- EXIT POINT
- EVACUATION ROUTE

- CONFINED SPACE
- COMPRESSED AIR
- SWITCH BOARD
- HAZARDOUS GOODS

### EVACUATION PROCEDURES

- Leave Immediately using the nearest Safe Exit, Look for signs of danger and take care while doing so, Listen to and follow all instructions given by officers and wardens
- Move quickly, Stay low below Smoke but Do NOT Run
- Move towards and reach your designated Evacuation Assembly Area
- Report any incident, accident, observation or injury to Wardens and Officers especially if you are aware of anybody still inside
- Remain in the Evacuation Assembly Area until told you may leave by Fire Wardens or Emergency Officers

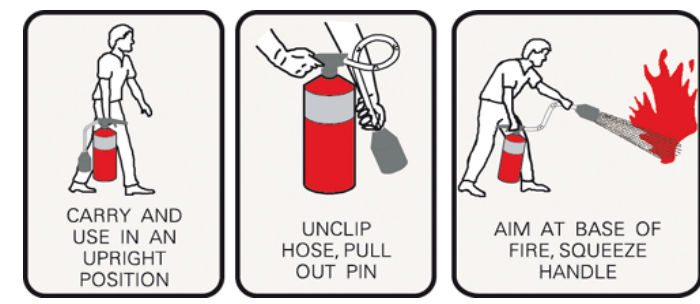


# EVACUATION DIAGRAM



## HOW TO USE A FIRE EXTINGUISHER

- PULL THE PIN**  
Break seal and test the extinguisher
- AIM AT THE BASE OF THE FIRE**  
Make sure you have a means of escape
- SQUEEZE THE HANDLE**  
To operate the extinguisher and discharge the agent
- SWEEP FROM SIDE TO SIDE**  
Completely extinguish the fire

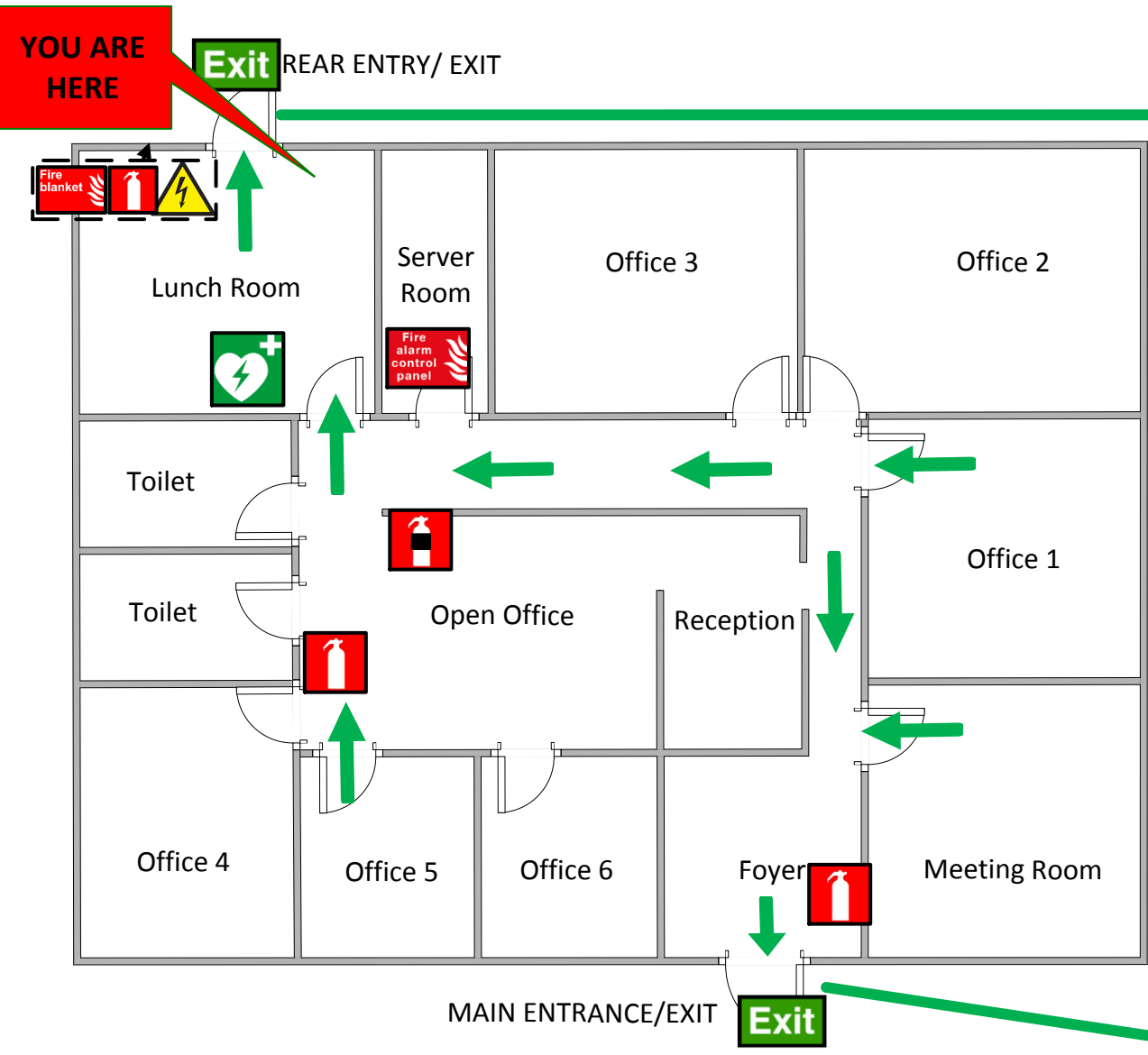


## IN CASE OF FIRE

- R** REMOVE PEOPLE FROM IMMEDIATE DANGER
- A** ALERT NEARBY EMPLOYEES AND MEMBERS OF THE PUBLIC TO EVACUATE THEN DIAL **000**  
OPERATE MANUAL CALL POINT IF APPLICABLE
- C** CONFINE SMOKE & FIRE, CLOSE DOORS & WINDOWS IF SAFE TO DO SO, STAY LOW UNDER SMOKE
- E** EXTINGUISH AND CONTROL FIRE IF SAFE TO DO SO



NOT TO SCALE\*

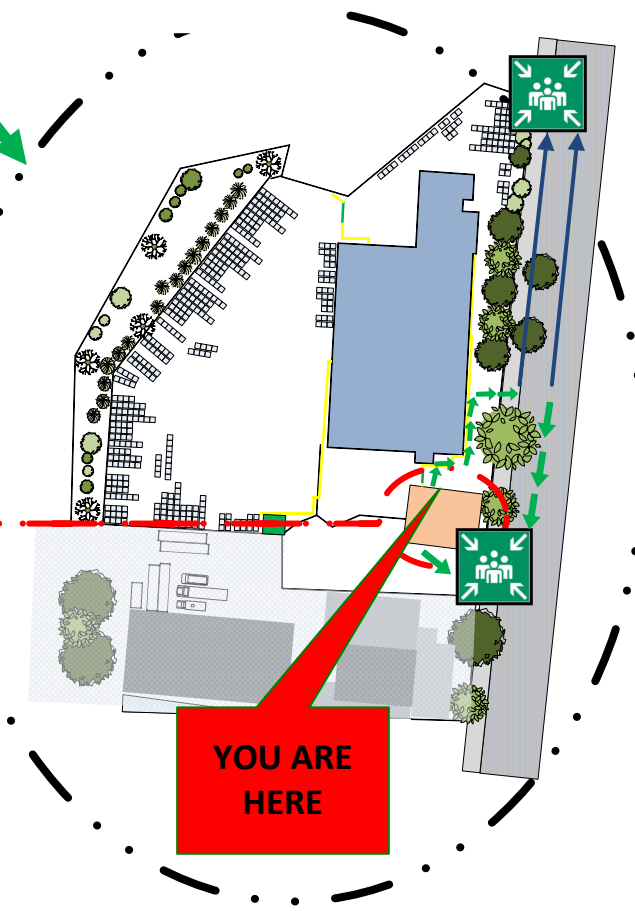


Exit Via Gate 2 by following walkway in a NW direction. Proceed to Primary Assy outside Gate 1 by turning Right after exiting Gate 2.

Proceed to Secondary if appropriate by turning Left to NW corner of Property

Exit Via NE Gate (Gate 1) Proceed to Assy Area to Immediate Left of Gate 1

Secondary Assy Area to be used if Primary is unsafe, Exit Gate 1 and proceed to NW corner of Property



## ADMINISTRATION BUILDING



Pallecon Solutions

**CHEP Pallecon Solutions**  
243 Arden Street  
North Melbourne  
Victoria 3051

1300 133 133  
DRAFTED 13/02/2017 EXPIRES 13/02/2020  
MUST BE REVIEWED ANNUALLY

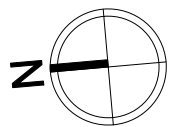
### SITE LEGEND

- |  |                   |  |                     |
|--|-------------------|--|---------------------|
|  | CONTROL PANEL     |  | FIRST AID           |
|  | BOOSTER POINT     |  | AED                 |
|  | FIRE HYDRANT      |  | YOU ARE HERE MARKER |
|  | FIRE HOSE         |  | ASSEMBLY AREA       |
|  | FIRE EXTINGUISHER |  | EXIT POINT          |
|  | FIRE BLANKET      |  | EVACUATION ROUTE    |

- |  |                |  |                |  |              |  |                 |
|--|----------------|--|----------------|--|--------------|--|-----------------|
|  | CONFINED SPACE |  | COMPRESSED AIR |  | SWITCH BOARD |  | HAZARDOUS GOODS |
|--|----------------|--|----------------|--|--------------|--|-----------------|

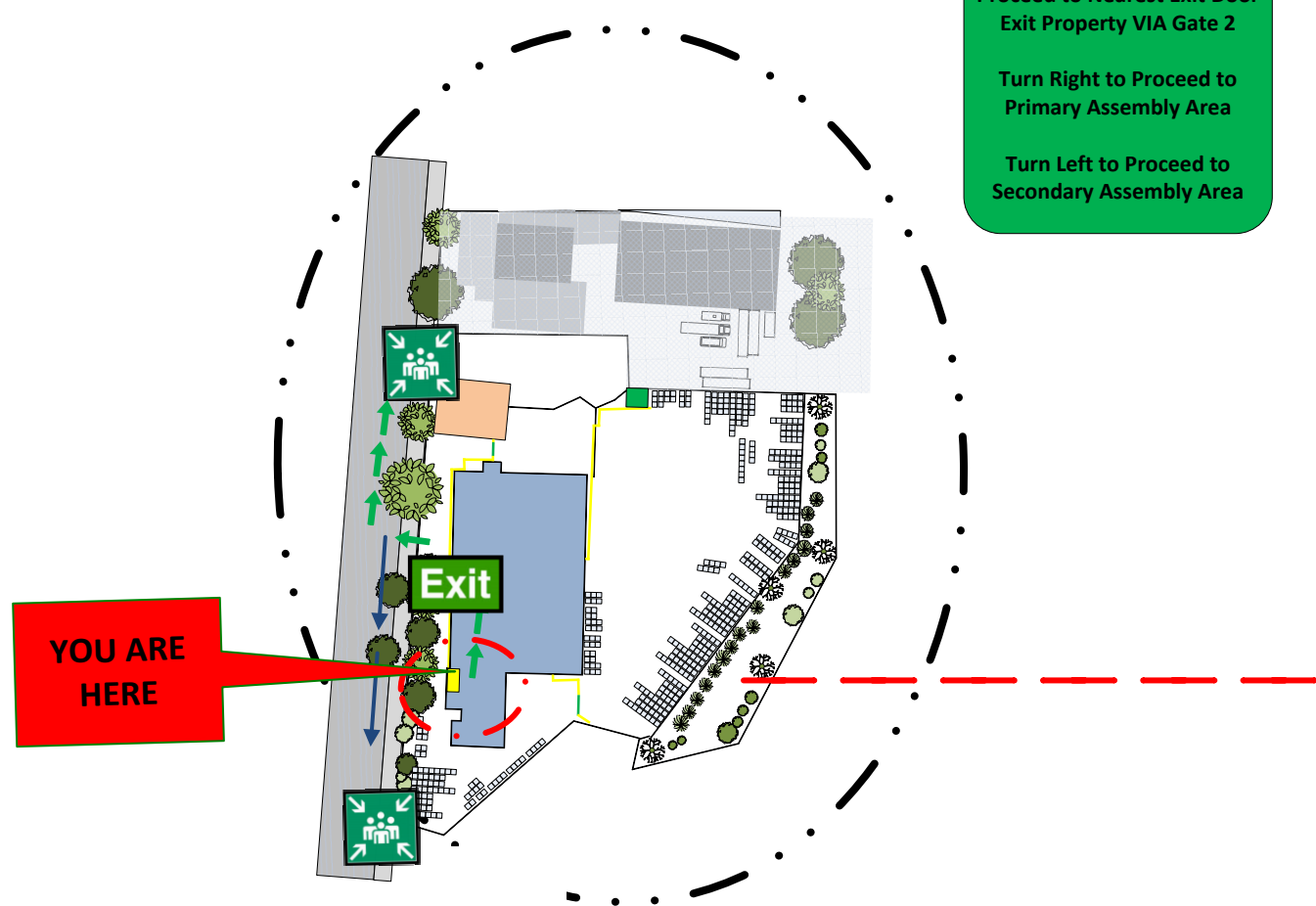
## EVACUATION PROCEDURES

- Leave Immediately using the nearest Safe Exit, Look for signs of danger and take care while doing so, Listen to and follow all instructions given by officers and wardens
- Move quickly, Stay low below Smoke but Do NOT Run
- Move towards and reach your designated Evacuation Assembly Area
- Report any incident, accident, observation or injury to Wardens and Officers especially if you are aware of anybody still inside
- Remain in the Evacuation Assembly Area until told you may leave by Fire Wardens or Emergency Officers



# EVACUATION DIAGRAM

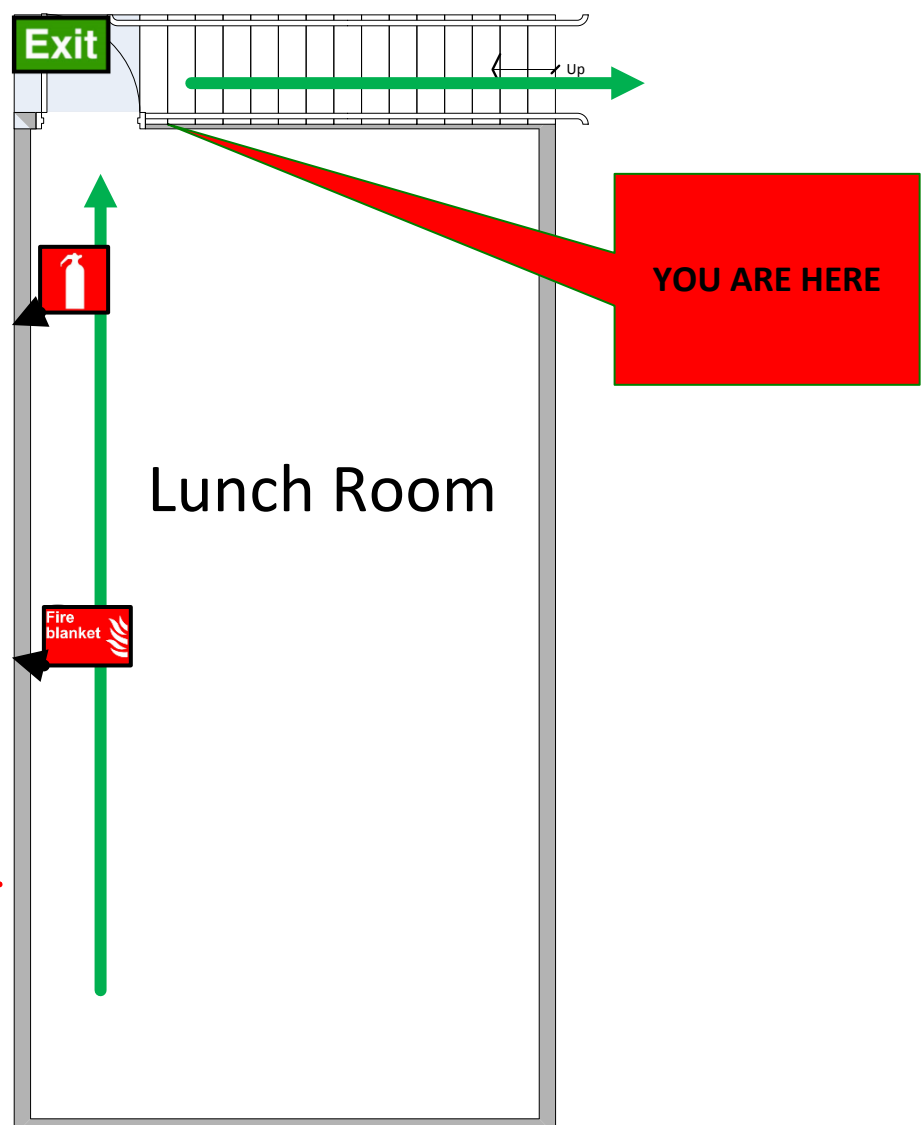
## Level One Lunchroom



Exit Down Stairwell  
Proceed to Nearest Exit Door  
Exit Property VIA Gate 2

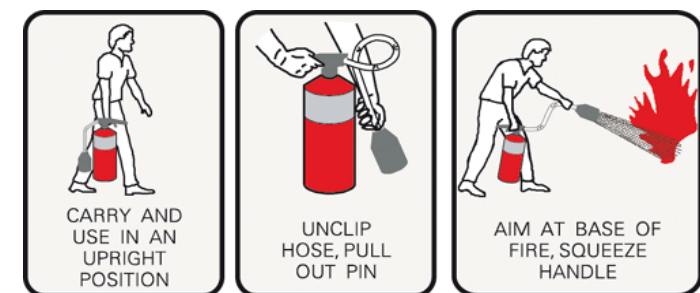
Turn Right to Proceed to  
Primary Assembly Area

Turn Left to Proceed to  
Secondary Assembly Area



## HOW TO USE A FIRE EXTINGUISHER

- PULL THE PIN**  
*Break seal and test the extinguisher*
- AIM AT THE BASE OF THE FIRE**  
*Make sure you have a means of escape*
- SQUEEZE THE HANDLE**  
*To operate the extinguisher and discharge the agent*
- SWEEP FROM SIDE TO SIDE**  
*Completely extinguish the fire*



Pallecon Solutions

**CHEP Pallecon Solutions**  
243 Arden Street  
North Melbourne  
Victoria 3051

1300 133 133  
DRAFTED 13/02/2017 EXPIRES 13/02/2020  
MUST BE REVIEWED ANNUALLY

### SITE LEGEND

	CONTROL PANEL		FIRST AID
	BOOSTER POINT		AED
	FIRE HYDRANT		YOU ARE HERE MARKER
	FIRE HOSE		ASSEMBLY AREA
	FIRE EXTINGUISHER		EXIT POINT
	FIRE BLANKET		EVACUATION ROUTE

	CONFINED SPACE		COMPRESSED AIR		SWITCH BOARD		HAZARDOUS GOODS
--	----------------	--	----------------	--	--------------	--	-----------------

## EVACUATION PROCEDURES

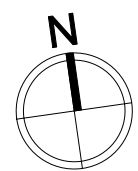
- Leave Immediately using the nearest Safe Exit, Look for signs of danger and take care while doing so, Listen to and follow all instructions given by officers and wardens
- Move quickly, Stay low below Smoke but Do NOT Run
- Move towards and reach your designated Evacuation Assembly Area
- Report any incident, accident, observation or injury to Wardens and Officers especially if you are aware of anybody still inside
- Remain in the Evacuation Assembly Area until told you may leave by Fire Wardens or Emergency Officers

## IN CASE OF FIRE

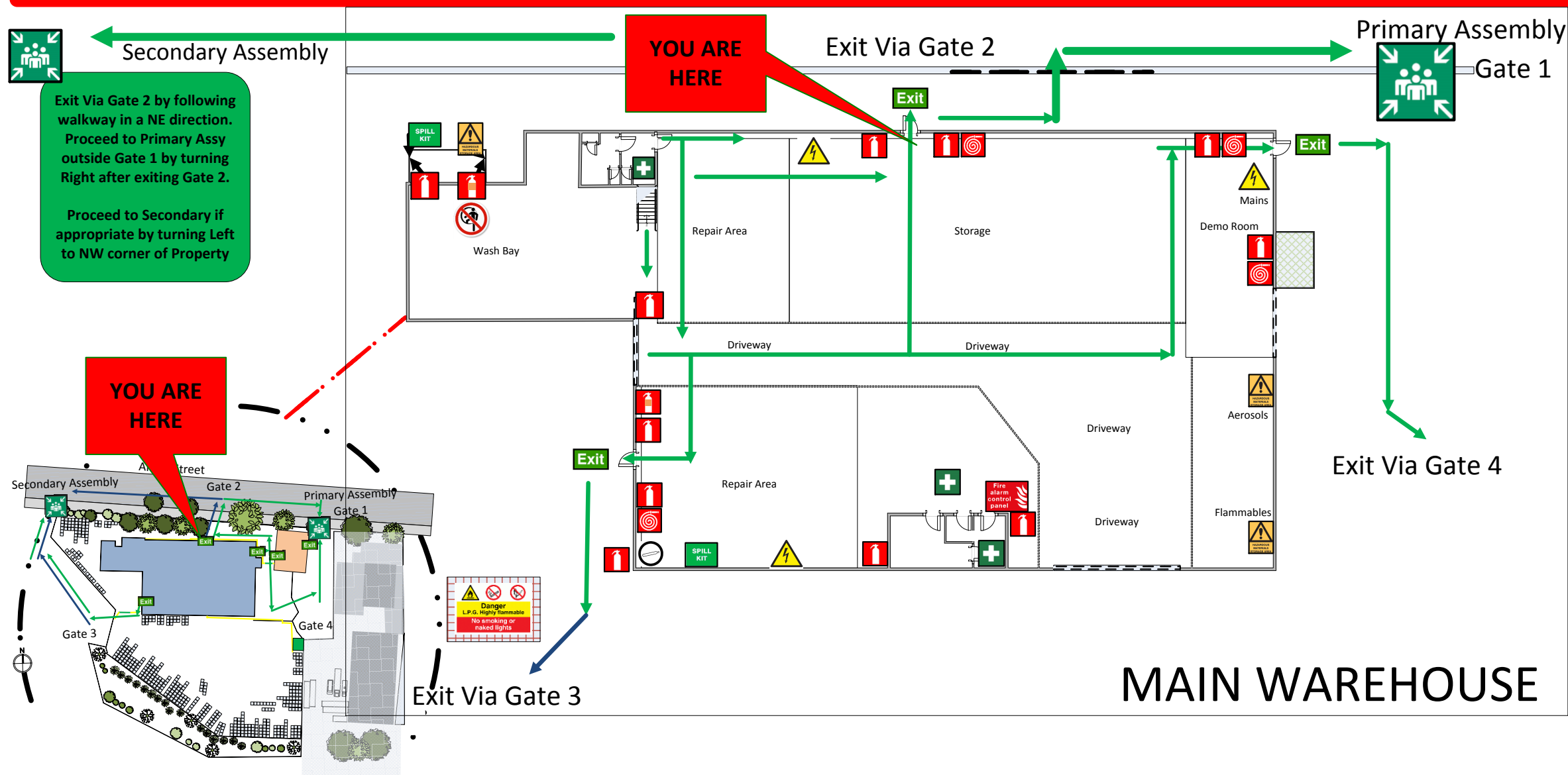
- R** REMOVE PEOPLE FROM IMMEDIATE DANGER
- A** ALERT NEARBY EMPLOYEES AND MEMBERS OF THE PUBLIC TO EVACUATE THEN DIAL **000** OPERATE MANUAL CALL POINT IF APPLICABLE
- C** CONFINE SMOKE & FIRE, CLOSE DOORS & WINDOWS IF SAFE TO DO SO, STAY LOW UNDER SMOKE
- E** EXTINGUISH AND CONTROL FIRE IF SAFE TO DO SO



NOT TO SCALE\*



# EVACUATION DIAGRAM



Exit Via Gate 2 by following walkway in a NE direction. Proceed to Primary Assy outside Gate 1 by turning Right after exiting Gate 2.

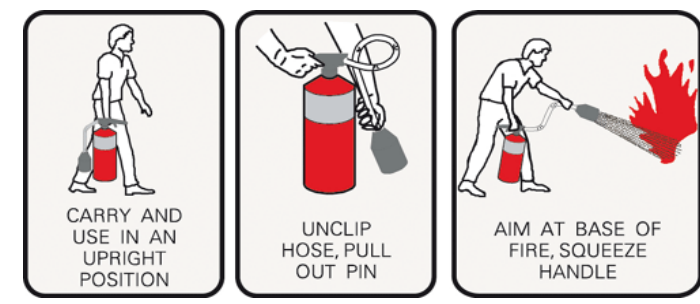
Proceed to Secondary if appropriate by turning Left to NW corner of Property

**YOU ARE HERE**



## HOW TO USE A FIRE EXTINGUISHER

- PULL THE PIN**  
Break seal and test the extinguisher
- AIM AT THE BASE OF THE FIRE**  
Make sure you have a means of escape
- SQUEEZE THE HANDLE**  
To operate the extinguisher and discharge the agent
- SWEEP FROM SIDE TO SIDE**  
Completely extinguish the fire



Pallecon Solutions

**CHEP Pallecon Solutions**  
243 Arden Street  
North Melbourne  
Victoria 3051

1300 133 133  
DRAFTED 13/02/2017 EXPIRES 13/02/2020  
MUST BE REVIEWED ANNUALLY

### SITE LEGEND

- |  |                   |  |                     |
|--|-------------------|--|---------------------|
|  | CONTROL PANEL     |  | FIRST AID           |
|  | BOOSTER POINT     |  | AED                 |
|  | FIRE HYDRANT      |  | YOU ARE HERE MARKER |
|  | FIRE HOSE         |  | ASSEMBLY AREA       |
|  | FIRE EXTINGUISHER |  | EXIT POINT          |
|  | FIRE BLANKET      |  | EVACUATION ROUTE    |

- |  |                |  |                |  |              |  |                 |
|--|----------------|--|----------------|--|--------------|--|-----------------|
|  | CONFINED SPACE |  | COMPRESSED AIR |  | SWITCH BOARD |  | HAZARDOUS GOODS |
|--|----------------|--|----------------|--|--------------|--|-----------------|

### EVACUATION PROCEDURES

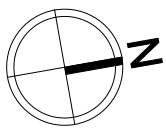
- Leave Immediately using the nearest Safe Exit, Look for signs of danger and take care while doing so, Listen to and follow all instructions given by officers and wardens
- Move quickly, Stay low below Smoke but Do NOT Run
- Move towards and reach your designated Evacuation Assembly Area
- Report any incident, accident, observation or injury to Wardens and Officers especially if you are aware of anybody still inside
- Remain in the Evacuation Assembly Area until told you may leave by Fire Wardens or Emergency Officers

### IN CASE OF FIRE

- R** REMOVE PEOPLE FROM IMMEDIATE DANGER
- A** ALERT NEARBY EMPLOYEES AND MEMBERS OF THE PUBLIC TO EVACUATE THEN DIAL **000** OPERATE MANUAL CALL POINT IF APPLICABLE
- C** CONFINE SMOKE & FIRE, CLOSE DOORS & WINDOWS IF SAFE TO DO SO, STAY LOW UNDER SMOKE
- E** EXTINGUISH AND CONTROL FIRE IF SAFE TO DO SO



NOT TO SCALE\*

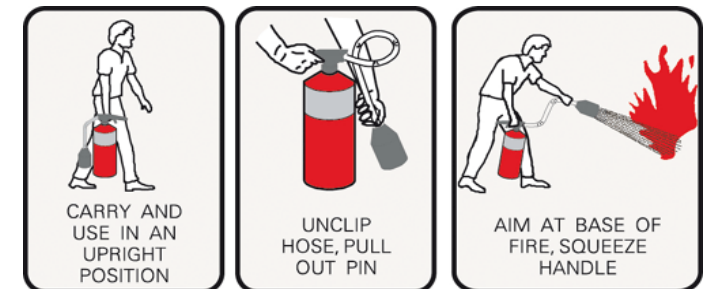


# EVACUATION DIAGRAM



## HOW TO USE A FIRE EXTINGUISHER

- PULL THE PIN**  
*Break seal and test the extinguisher*
- AIM AT THE BASE OF THE FIRE**  
*Make sure you have a means of escape*
- SQUEEZE THE HANDLE**  
*To operate the extinguisher and discharge the agent*
- SWEEP FROM SIDE TO SIDE**  
*Completely extinguish the fire*



## IN CASE OF FIRE

- R** REMOVE PEOPLE FROM IMMEDIATE DANGER
- A** ALERT NEARBY EMPLOYEES AND MEMBERS OF THE PUBLIC TO EVACUATE THEN DIAL **000**  
OPERATE MANUAL CALL POINT IF APPLICABLE
- C** CONFINE SMOKE & FIRE, CLOSE DOORS & WINDOWS IF SAFE TO DO SO, STAY LOW UNDER SMOKE
- E** EXTINGUISH AND CONTROL FIRE IF SAFE TO DO SO



NOT TO SCALE\*



Pallecon Solutions

**CHEP Pallecon Solutions**  
243 Arden Street  
North Melbourne  
Victoria 3051

1300 133 133

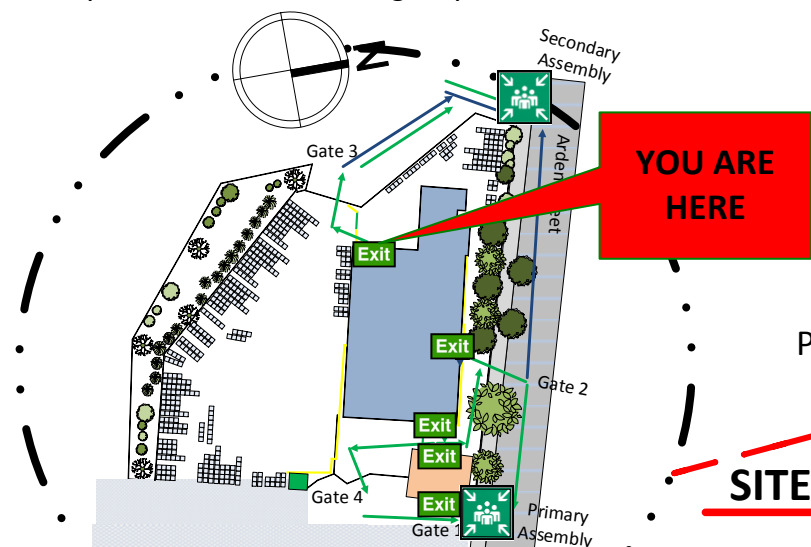
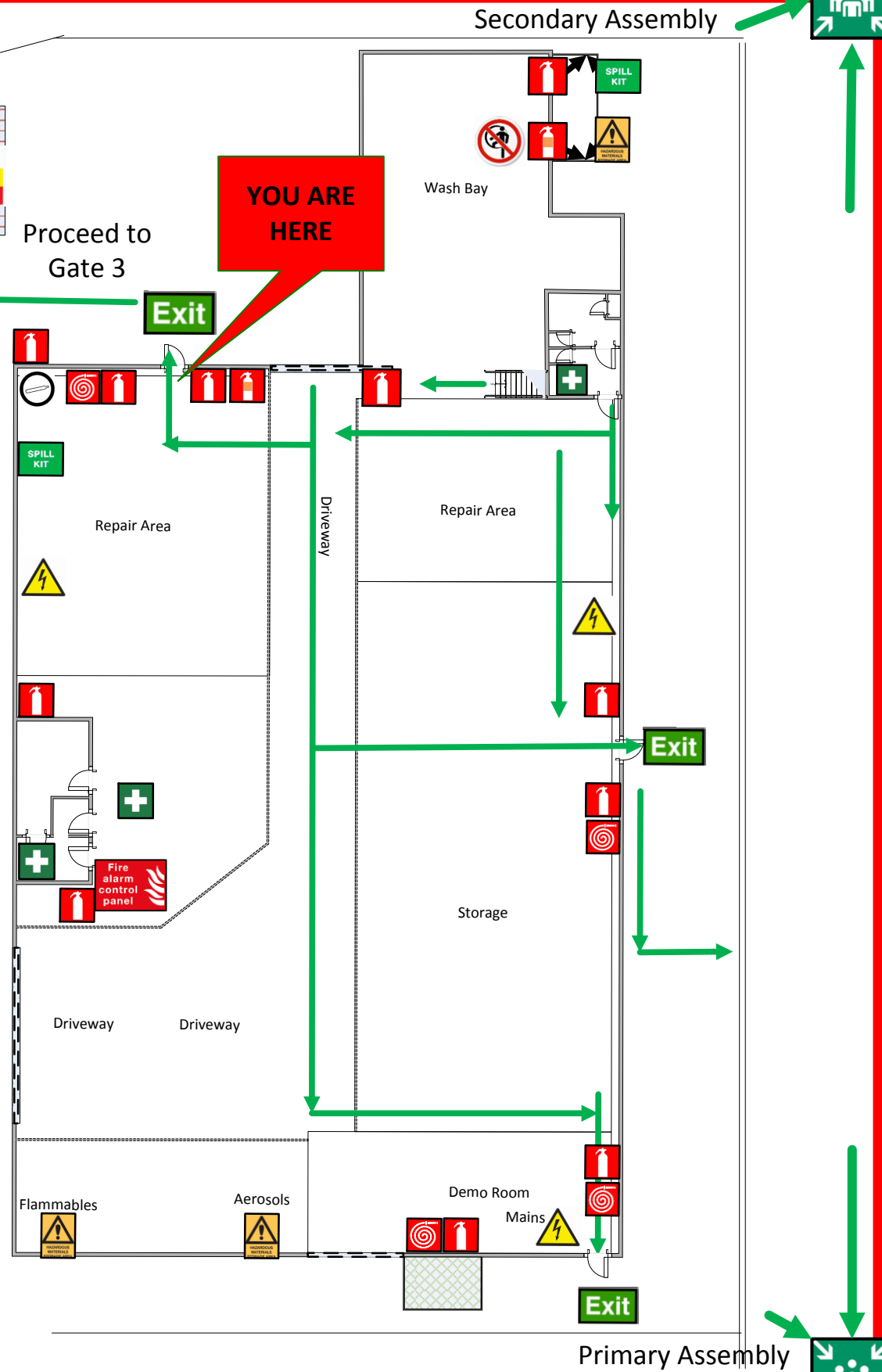
DRAFTED 13/02/2017 EXPIRES 13/02/2020  
MUST BE REVIEWED ANNUALLY

## EVACUATION PROCEDURES

Leave Immediately using the nearest Safe Exit, Look for signs of danger and take care while doing so, Listen to and follow all instructions given by officers and wardens  
Move quickly, Stay low below Smoke but Do NOT Run  
Move towards and reach your designated Evacuation Assembly Area  
Report any incident, accident, observation or injury to Wardens and Officers especially if you are aware of anybody still inside  
Remain in the Evacuation Assembly Area until told you may leave by Fire Wardens or Emergency Officers

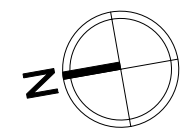
Exit Via Gate 3 by following walkway in a SW direction. Proceed to Secondary Assy by turning Right after exiting Gate 3.  
Proceed to Primary if appropriate by turning Left then proceed through Gate 4 to NE front corner of Property

### MAIN WAREHOUSE



### SITE LEGEND

	CONTROL PANEL		FIRE HYDRANT		FIRE HOSE		FIRE BLANKET		FIRE EXTINGUISHER		CONFINED SPACE		HAZARDOUS GOODS
	FIRST AID		AED		ASSEMBLY AREA		EXIT POINT		SWITCH BOARD		EVACUATION ROUTE		COMPRESSED AIR

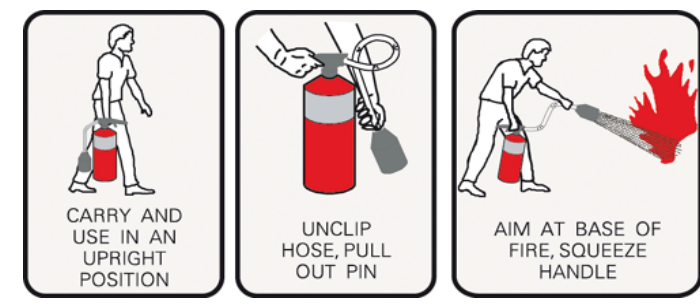


# EVACUATION DIAGRAM



## HOW TO USE A FIRE EXTINGUISHER

- PULL THE PIN**  
*Break seal and test the extinguisher*
- AIM AT THE BASE OF THE FIRE**  
*Make sure you have a means of escape*
- SQUEEZE THE HANDLE**  
*To operate the extinguisher and discharge the agent*
- SWEEP FROM SIDE TO SIDE**  
*Completely extinguish the fire*



## IN CASE OF FIRE

- R** REMOVE PEOPLE FROM IMMEDIATE DANGER
- A** ALERT NEARBY EMPLOYEES AND MEMBERS OF THE PUBLIC TO EVACUATE THEN DIAL **000**  
OPERATE MANUAL CALL POINT IF APPLICABLE
- C** CONFINE SMOKE & FIRE, CLOSE DOORS & WINDOWS IF SAFE TO DO SO, STAY LOW UNDER SMOKE
- E** EXTINGUISH AND CONTROL FIRE IF SAFE TO DO SO



NOT TO SCALE\*



Pallecon Solutions

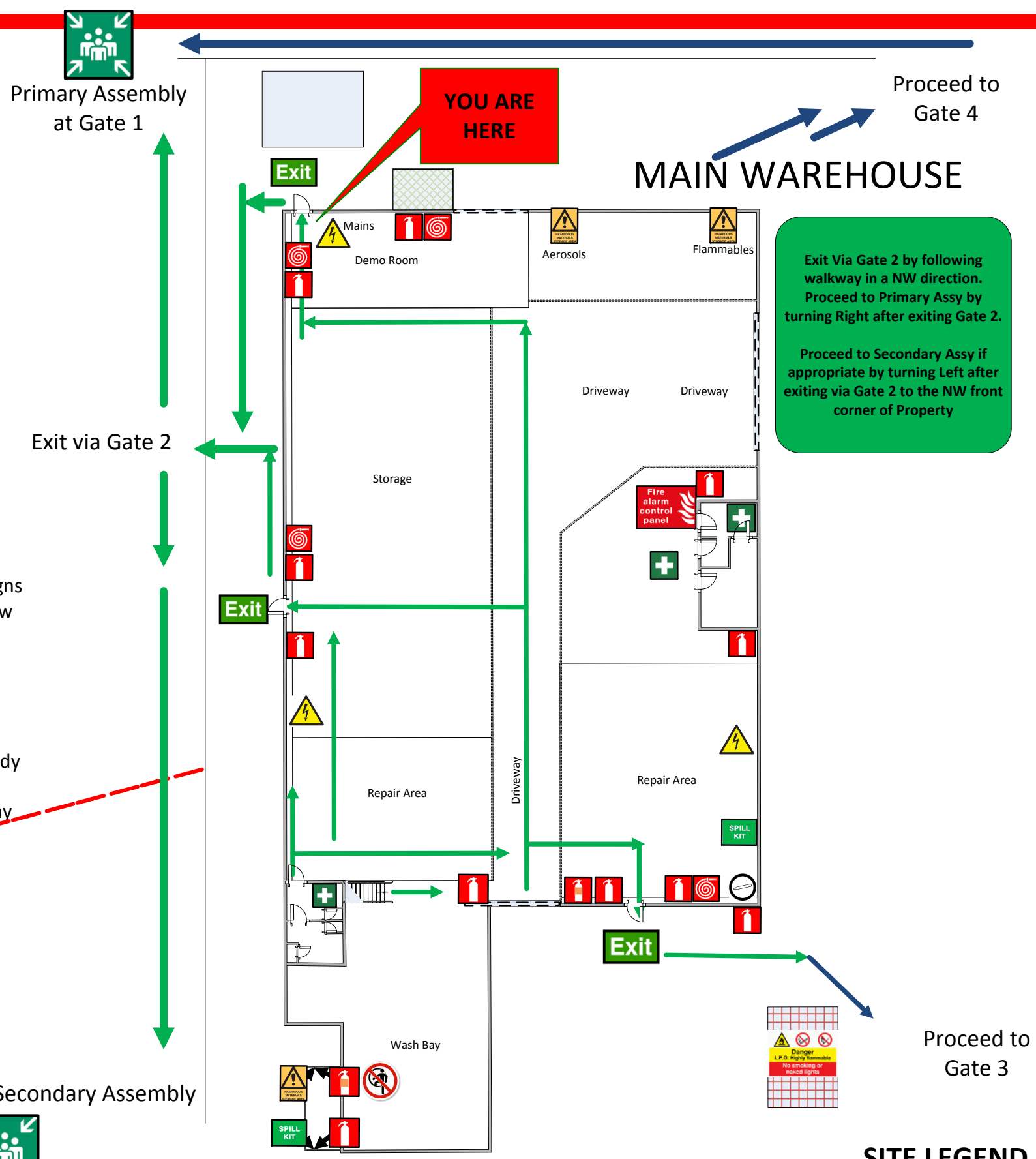
**CHEP Pallecon Solutions**  
 243 Arden Street  
 North Melbourne  
 Victoria 3051

1300 133 133

DRAFTED 13/02/2017 EXPIRES 13/02/2020  
 MUST BE REVIEWED ANNUALLY

## EVACUATION PROCEDURES

Leave Immediately using the nearest Safe Exit, Look for signs of danger and take care while doing so, Listen to and follow all instructions given by officers and wardens  
 Move quickly, Stay low below Smoke but Do NOT Run  
 Move towards and reach your designated Evacuation Assembly Area  
 Report any incident, accident, observation or injury to Wardens and Officers especially if you are aware of anybody still inside  
 Remain in the Evacuation Assembly Area until told you may leave by Fire Wardens or Emergency Officers



Exit Via Gate 2 by following walkway in a NW direction. Proceed to Primary Assy by turning Right after exiting Gate 2.  
 Proceed to Secondary Assy if appropriate by turning Left after exiting via Gate 2 to the NW front corner of Property



**SITE LEGEND**

	CONTROL PANEL		FIRE HYDRANT		FIRE HOSE		FIRE BLANKET		FIRE EXTINGUISHER		CONFINED SPACE		HAZARDOUS GOODS
	FIRST AID		AED		ASSEMBLY AREA		EXIT POINT		SWITCH BOARD		EVACUATION ROUTE		COMPRESSED AIR